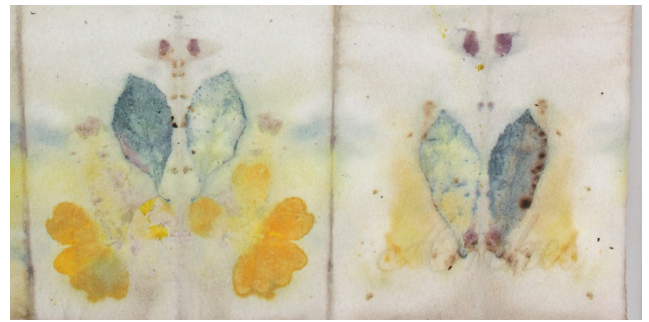


Botanical Contact Prints *aka* Eco-Prints on Paper
taught by **Catherine Alice Michaelis and Bill Moody**

Saturday August 5, 2017, 10am-5pm
10241 NE 20th Place, Bellevue, WA 98004 (*private residence*)
\$120 for BAG members; \$145 for non-members
(*or join BAG for \$20 and get the members' price!*)



Learn how plants can transfer their pigments to paper in both planned and unpredictable ways. We will use plants from the wild, the cultivated garden, and the kitchen to produce a wide palette of color and design. We'll also create stencils with leaves and flowers.

We'll start work quickly on a few sheets of paper and then step back and survey our successes, challenges, and differences. What can we learn from each other? Bill and Catherine will share their divergent methods. Bill will show folding techniques he's developed for unique looks for both *Soil Dwellers* and *Solar Return*. (Both May Day Press editions printed entirely on their botanical printed papers.) After lunch we'll quickly get a second batch processing. Each student should expect to produce 6-8 sheets of eco-printed paper.

The class will be held mainly outside (under a tarp if rainy) in a residential yard. Instructors will provide paper for printing, and a wide variety of plant material. Students will bring four 3" wide binder clips, their choice of latex/rubber/nitrile gloves to wear when cooking papers, and plant materials. Upon registration, students will receive an email confirmation, with a list of suggested plant materials to bring, and class location directions.

Catherine Alice Michaelis is an artist, lecturer, publisher, curator, teacher, and most recently – videopoet and animator. She is best known for her artist's books and printmaking projects, incorporating letterpress and pressure printing techniques. Michaelis has a B.A. in Media Arts & Creative Nonfiction. Her work has been featured in solo and group exhibitions throughout the country. **Bill Moody** has a B.S. in biology. He has been studying the medicinal use of plants for more than two decades and has spent a lifetime backpacking in the mountains. Attention to detail and a passion for experimentation combine with his general appreciation for nature creating a deep engagement in the botanical transfer process. Together Bill and Catherine co-create at May Day Press in Shelton, Washington.

Registration price includes supplies. The workshop will be limited to 12 students; no prerequisite skills required. Participants will receive an email confirmation and list of tools to bring to the class, location information, etc.

Please note: Catherine Michaelis will lecture for BAG on Thursday July 27, 7-9pm, Odegaard Undergraduate Library, University of Washington.

To register for the class, please complete the form below and send with a check, payable to **Book Arts Guild**, for the full registration amount (\$120 for BAG members, \$145 for non-members) to:

Lark Preyapongpisan, 10241 NE 20th Place, Bellevue, WA 98004

Registration for Botanical Contact Prints class, Saturday August 5, 2017, 10am-5pm

I am a BAG member; enclosed is a check for \$120

I am not a BAG member; enclosed is a check for \$145

Name _____

Address _____

City _____ State _____ Zip _____

Email _____ phone _____

Questions? Please contact Lark Preyapongpisan (sharkfinn@gmail.com).

FINE PRINT on REGISTRATIONS: Your registration reserves your place in the class. If the class is filled, a waiting list will be established. You will be notified if you are on the waiting list. If you sign up for the class but cannot attend and your place can be filled from the waiting list you will receive a full refund. If there is no waiting list, but you find a replacement for yourself, you will receive a full refund. If your place cannot be filled, your full registration may be retained to help cover the expenses of the class. If the class must be canceled, we will notify you and issue a full refund.